



THE MOUNTAIN SUMMIT 2,480 SQ FT 3 BEDROOM / 2.5 BATH

With its wrap-around deck and distinctive timbers, The Mountain Summit is reminiscent of a distant, weekend getaway – yet it’s a sustainable, energy-efficient home designed for everyday living. Uncompromising views can be savored from the rear deck, while the flowing interior layout provides an abundance of inviting spaces.

CONTACT:

Mark Cucarola

Platinum Homes, LLC

1127 South Mountain View Road

Castle Rock, Colorado 80109

OFFICE (303) 660-3675 MOBILE (303) 591-5041

mark@platinum-homes.com

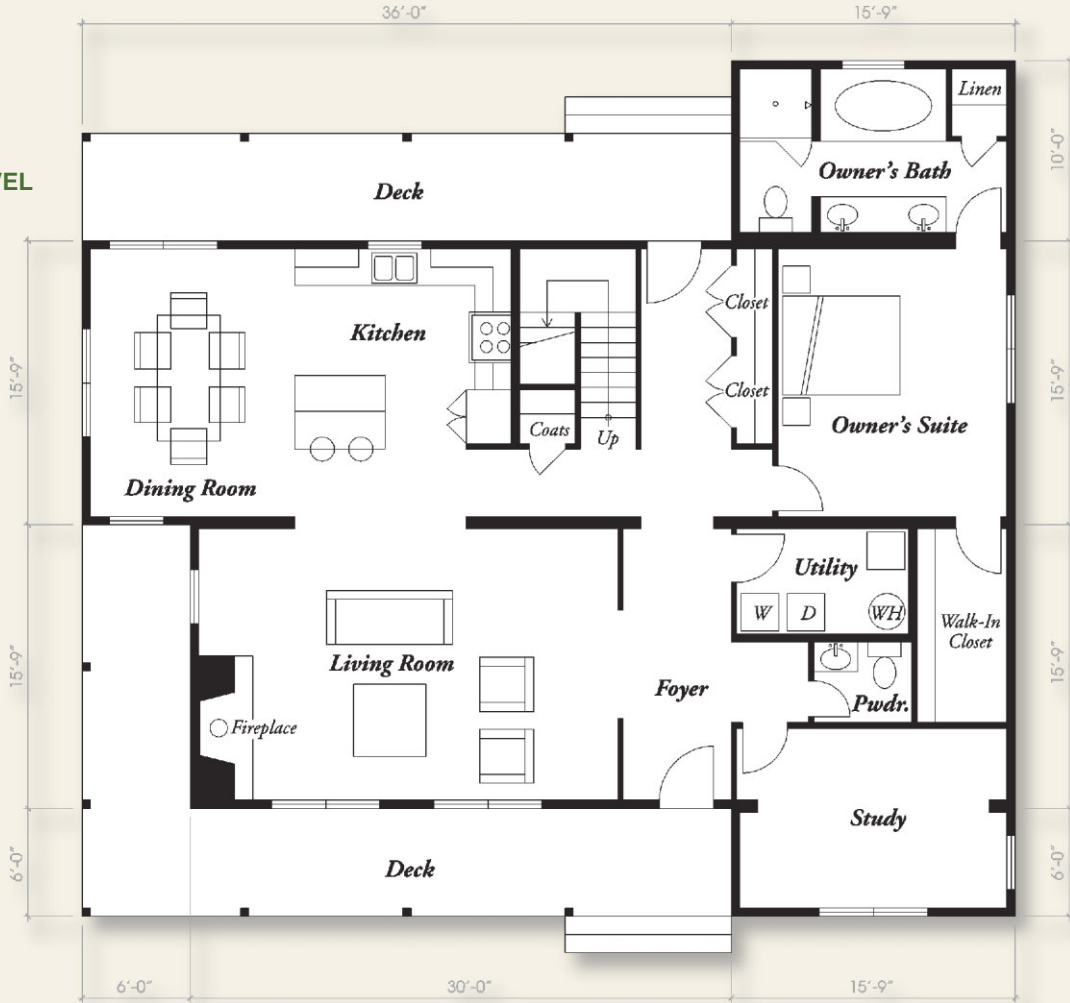
www.platinum-homes.com



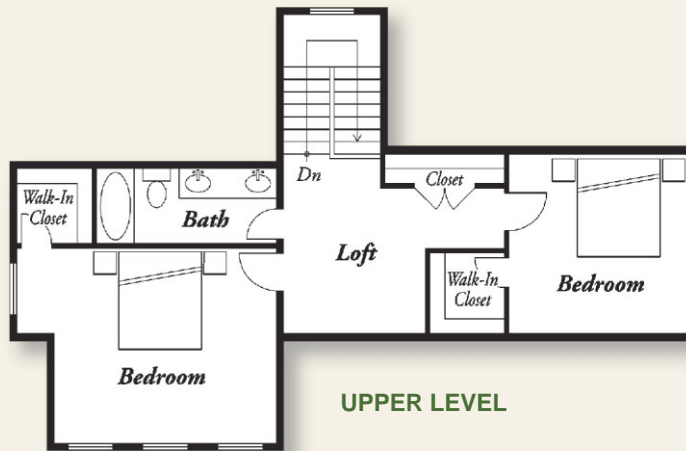
MOUNTAIN SUMMIT
 2,480 SQ FT
 3 BEDROOM / 2.5 BATH



MAIN LEVEL



UPPER LEVEL



Another Premier Development By



WILDPONTERESERVE.COM
 (303) 646-5225

All information contained herein was accurate at the time of publication. In order to maintain a high degree of quality and facilitate management flexibility, we reserve the right to make changes in price, specifications, materials or to change or discontinue floor plans without notice or obligation. Floor plan dimensions and square foot calculations are approximate. Renderings are artist's conception and are only representative. Base pricing is calculated using standard site conditions, and is subject to variation depending on soil, topography and engineering requirements of the individual homesite that is selected.

