



*Shown as an optional 2-story elevation.  
Floor plan shown as the ranch plan.*

**THE ZEPHYR 2,449 SQ FT 3 - 4 BEDROOM / 2.5 BATH**

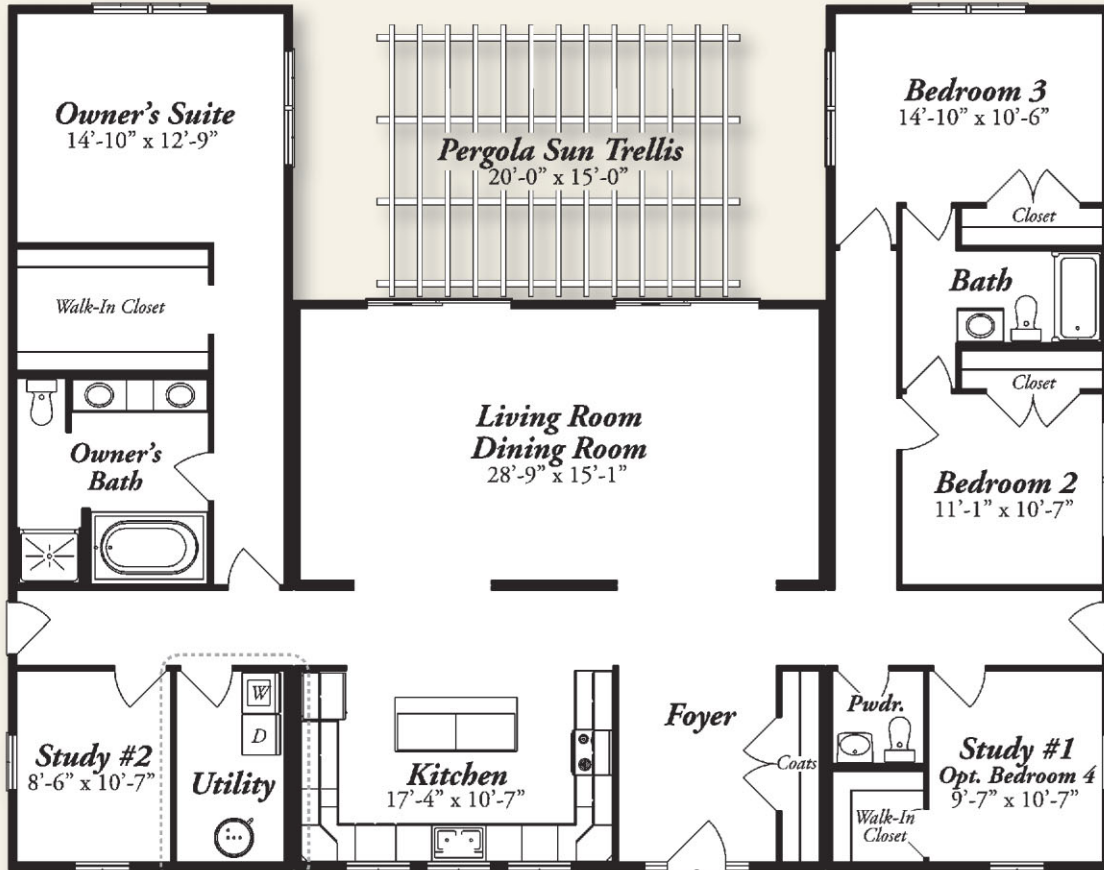
The Zephyr makes it easy to enjoy a sustainable lifestyle under the Colorado sky. An innovative design enables ideal solar panel integration, while expansive front and rear decks enable you to take in the majestic views and unspoiled landscape that surrounds you in every direction.

**CONTACT:**

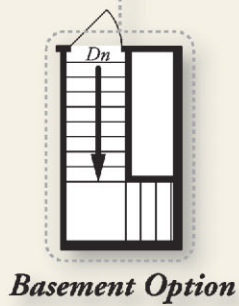
Mark Cucarola  
Platinum Homes, LLC  
1127 South Mountain View Road  
Castle Rock, Colorado 80109  
OFFICE (303) 660-3675 MOBILE (303) 591-5041  
mark@platinum-homes.com  
www.platinum-homes.com



**ZEPHYR**  
 2,449 SQ FT  
 3 - 4 BEDROOM / 2.5 BATH



**MAIN LEVEL**



Another Premier Development By



[WILDPOINTERESERVE.COM](http://WILDPOINTERESERVE.COM)  
 (303) 646-5225

*All information contained herein was accurate at the time of publication. In order to maintain a high degree of quality and facilitate management flexibility, we reserve the right to make changes in price, specifications, materials or to change or discontinue floor plans without notice or obligation. Floor plan dimensions and square foot calculations are approximate. Renderings are artist's conception and are only representative. Base pricing is calculated using standard site conditions, and is subject to variation depending on soil, topography and engineering requirements of the individual homesite that is selected.*

